

The Tate has launched a campaign asking us all if we can name 5 female artists.
#5womenartists

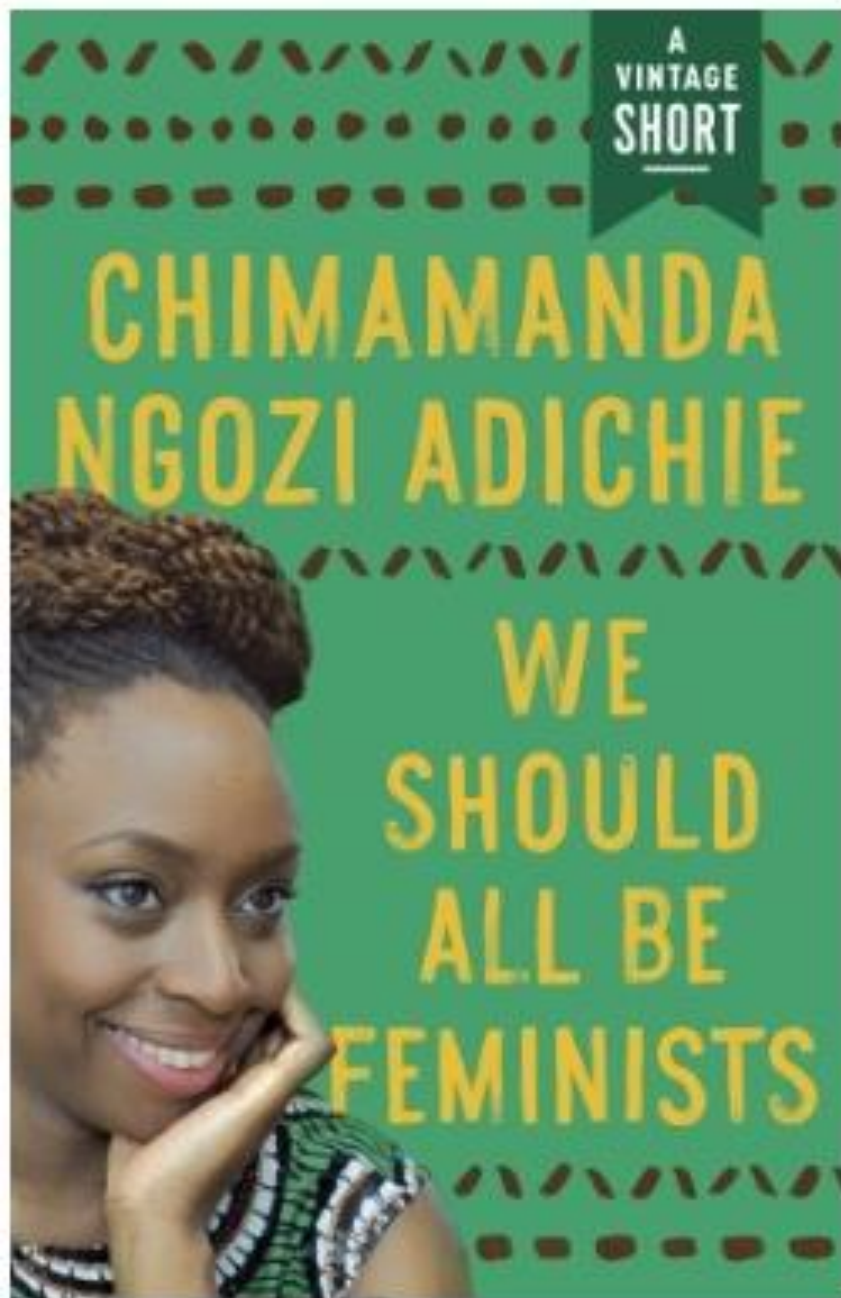
Why do you think they have created this campaign?

Can you name any female artists?

Take a look at online resources

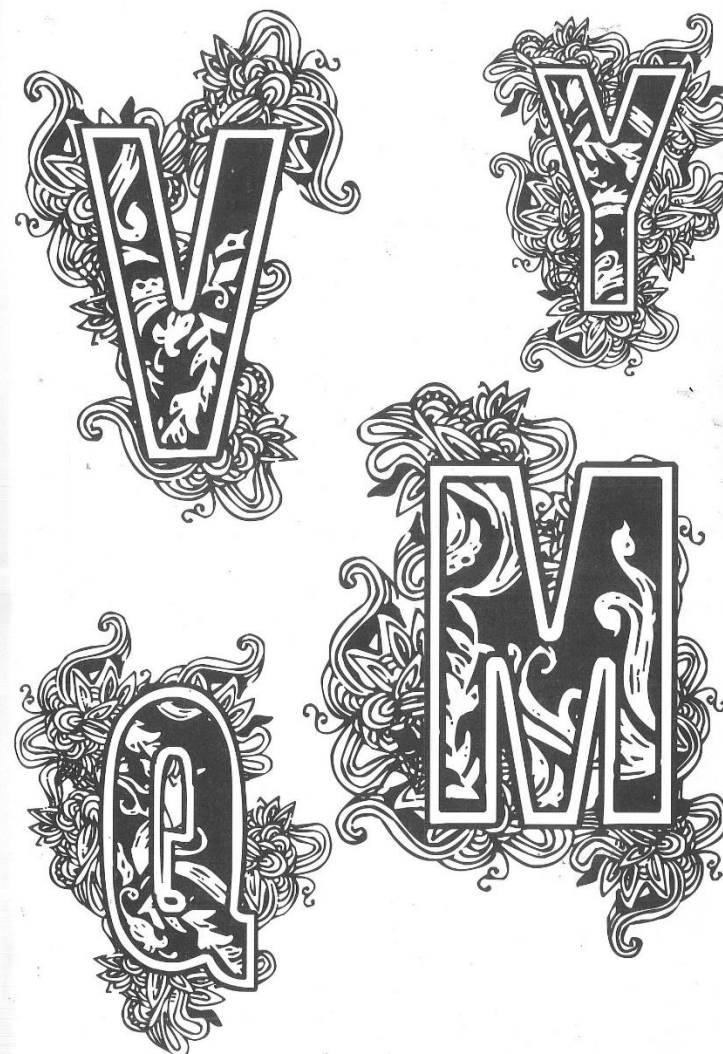
<https://www.tate.org.uk/art/women-art-tate>

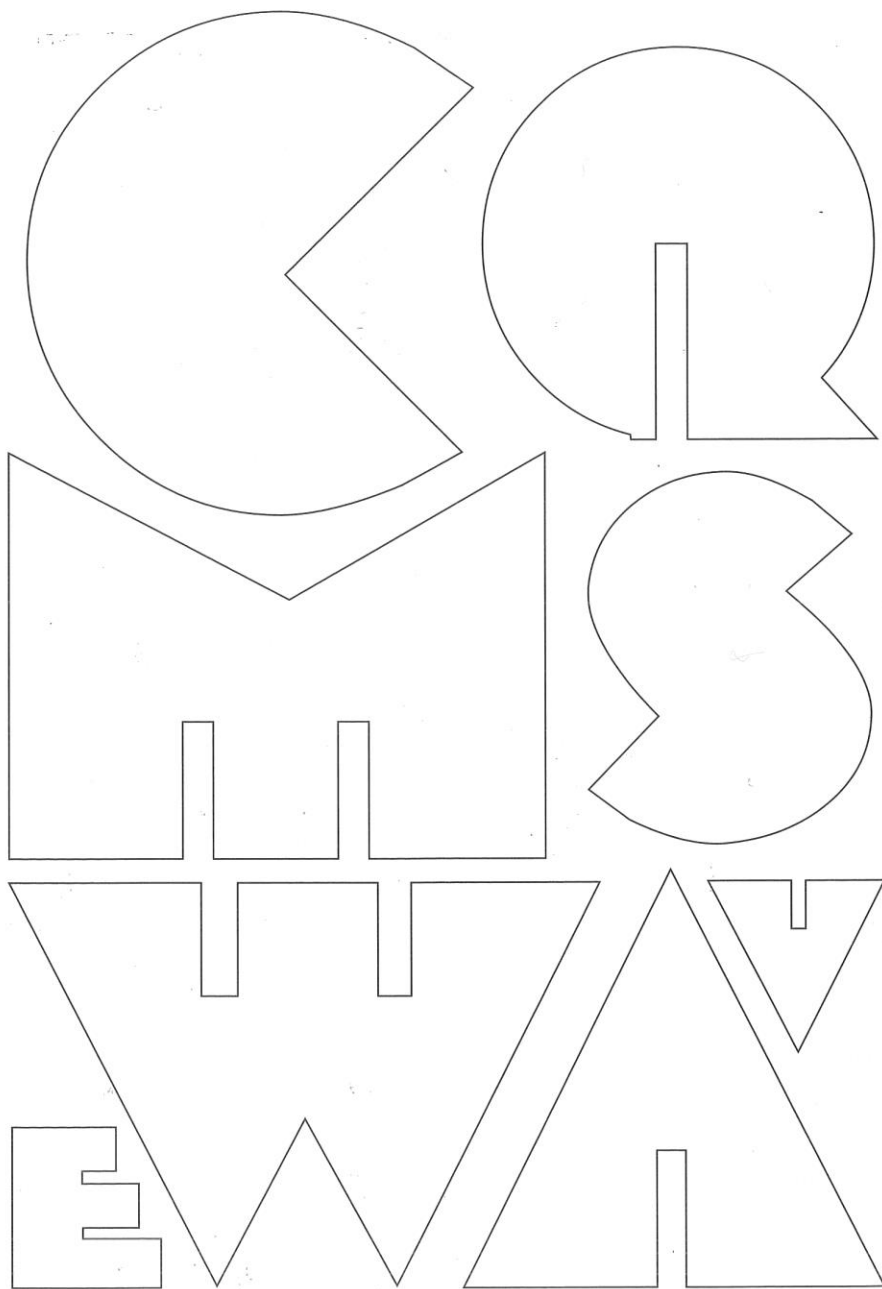




Listen to the TED talk on
YOUTUBE

Using tram lines write out
We should all be Feminists, using the decorative
fonts





A B C D E F G
H I J K L M
N O P Q R S T
U V W X Y Z

BABY TEETH

Milton Glaser (1929–) is one of the most celebrated graphic designers working in the United States today. One of his major accolades came in 2009 when he became the first graphic designer to receive the National Medal of the Arts award.

Glaser originally designed the font Baby Teeth in 1964 and reportedly based it upon a hand-painted sign in Mexico City. It would become famous two years later when John Berg, then art director at Columbia Records, approached Glaser to design a poster that would be packaged with Bob Dylan's *Greatest Hits* LP. Featuring the Baby Teeth typeface, the poster would become one of the most widely circulated of all time; close to six million were distributed with the incredibly popular album. Capturing the spirit of the 60s, Dylan's face is positioned in profile and his hair transformed into a psychedelic rainbow with the word 'Dylan', rendered in the Baby Teeth font, as the only text. The iconic poster is now a highly prized collectible item.

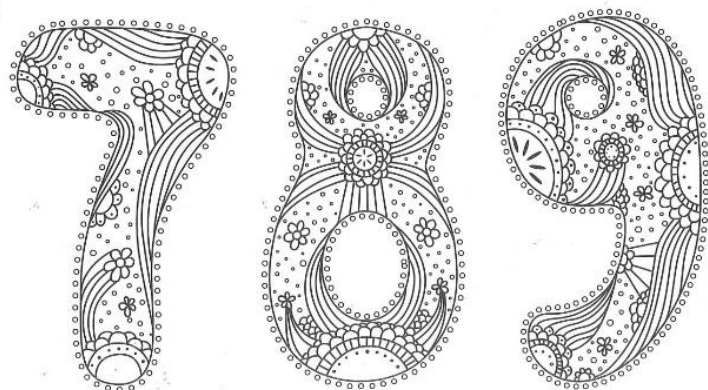
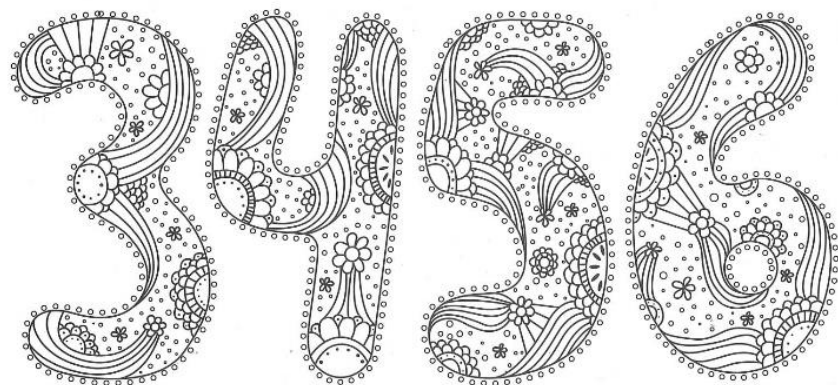
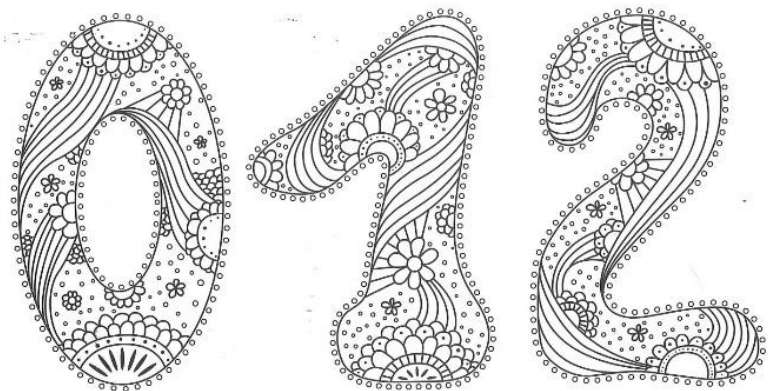
Q R
S T
U V

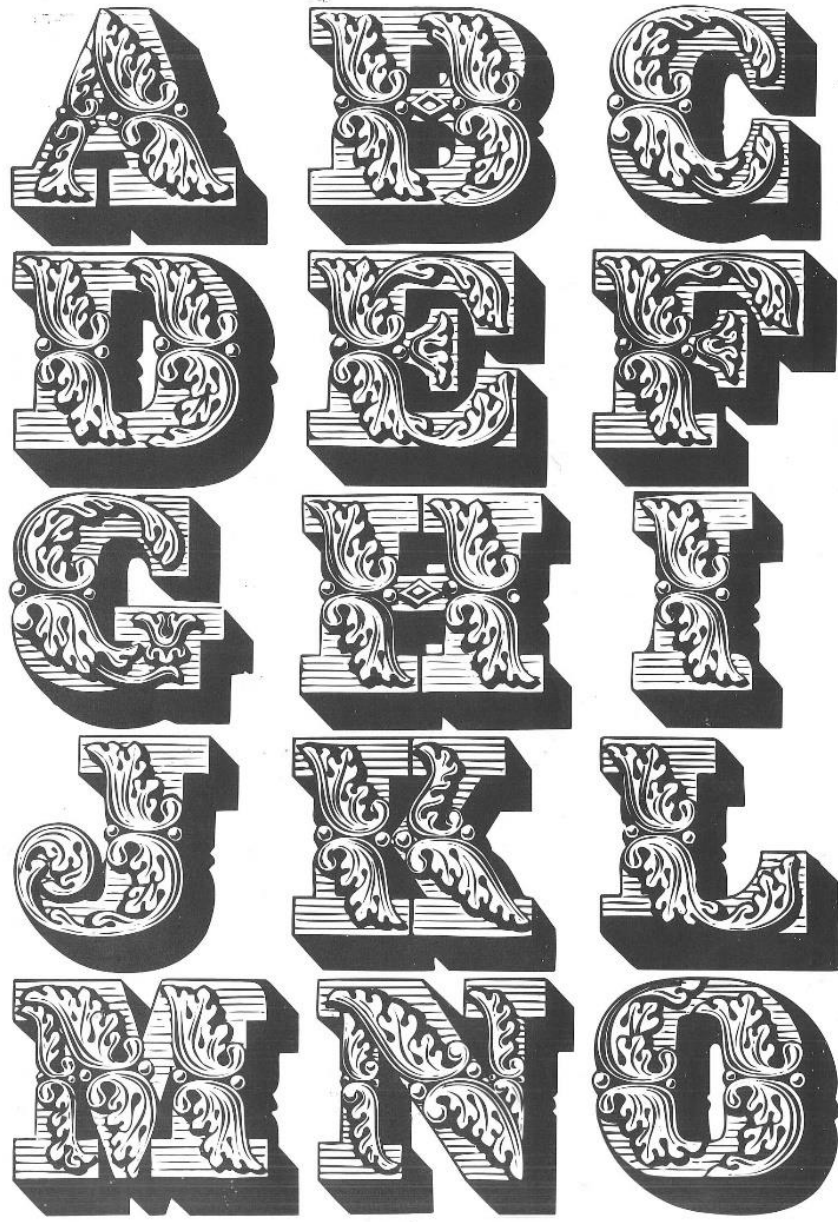
A B C D E F G
H I J K L M
N O P Q R S T
U V W X Y Z

Baskerville

Designed in the late 1750s and named after its creator, the Baskerville font was the result of attempts to improve on the legibility of type created by William Caslon. Baskerville increased the difference between the width of the strokes, making the serifs (tails) finer and more tapered, and shifted the angle of rounded letters to a straighter position. As a result, the characters appear softer and more regular.

John Baskerville (1706–75) was a renowned writing master who was fascinated with the aesthetics of letter forms. Baskerville's roman type was applauded for its simplicity and subtle elegance, and he ensured greater clarity in its presentation by creating blacker, glossier inks and using fine polished paper to increase visual contrast.





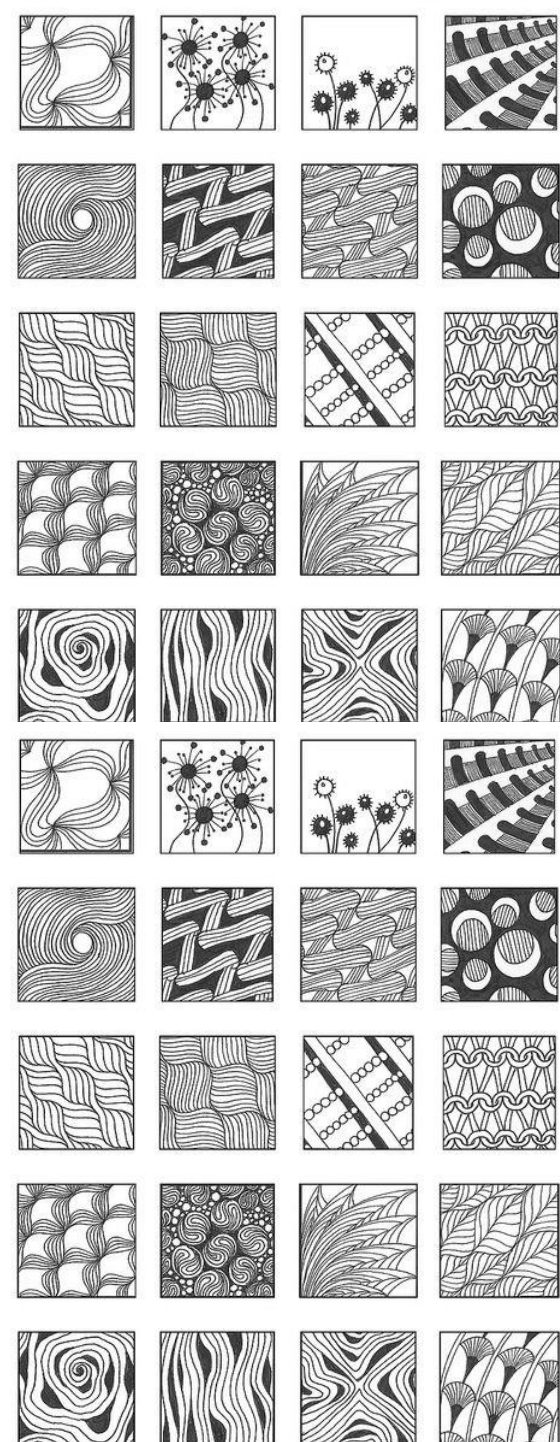
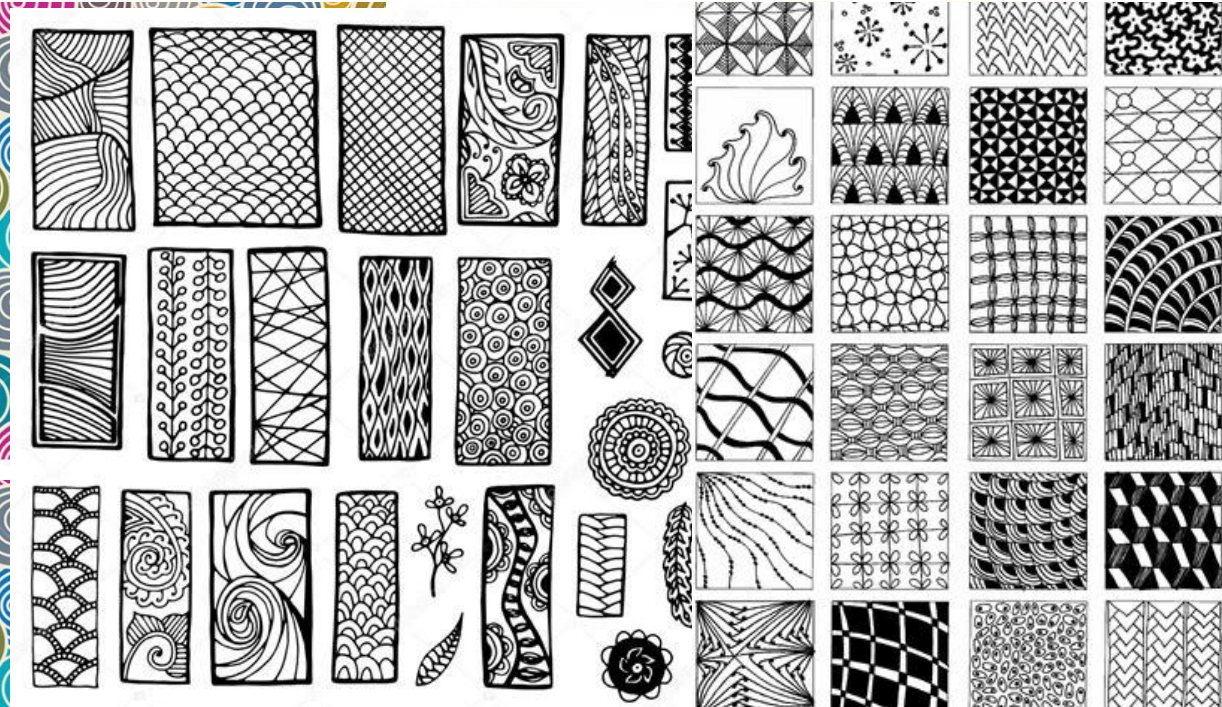


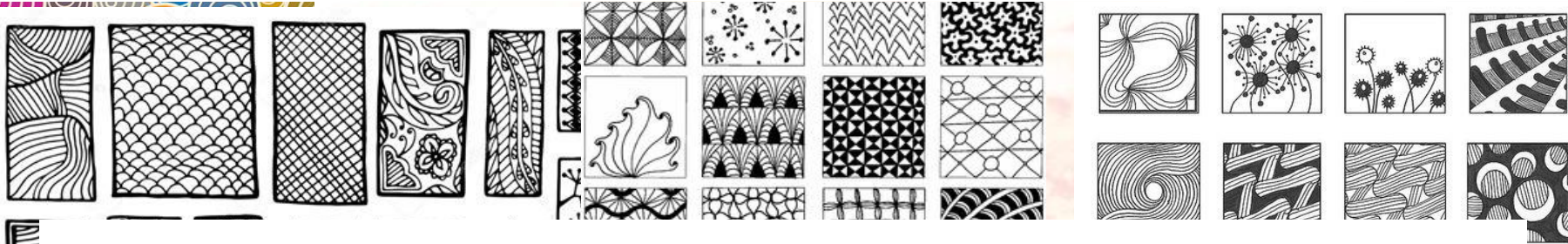
The door



<https://www.youtube.com/watch?v=7DdM-4siaQw>

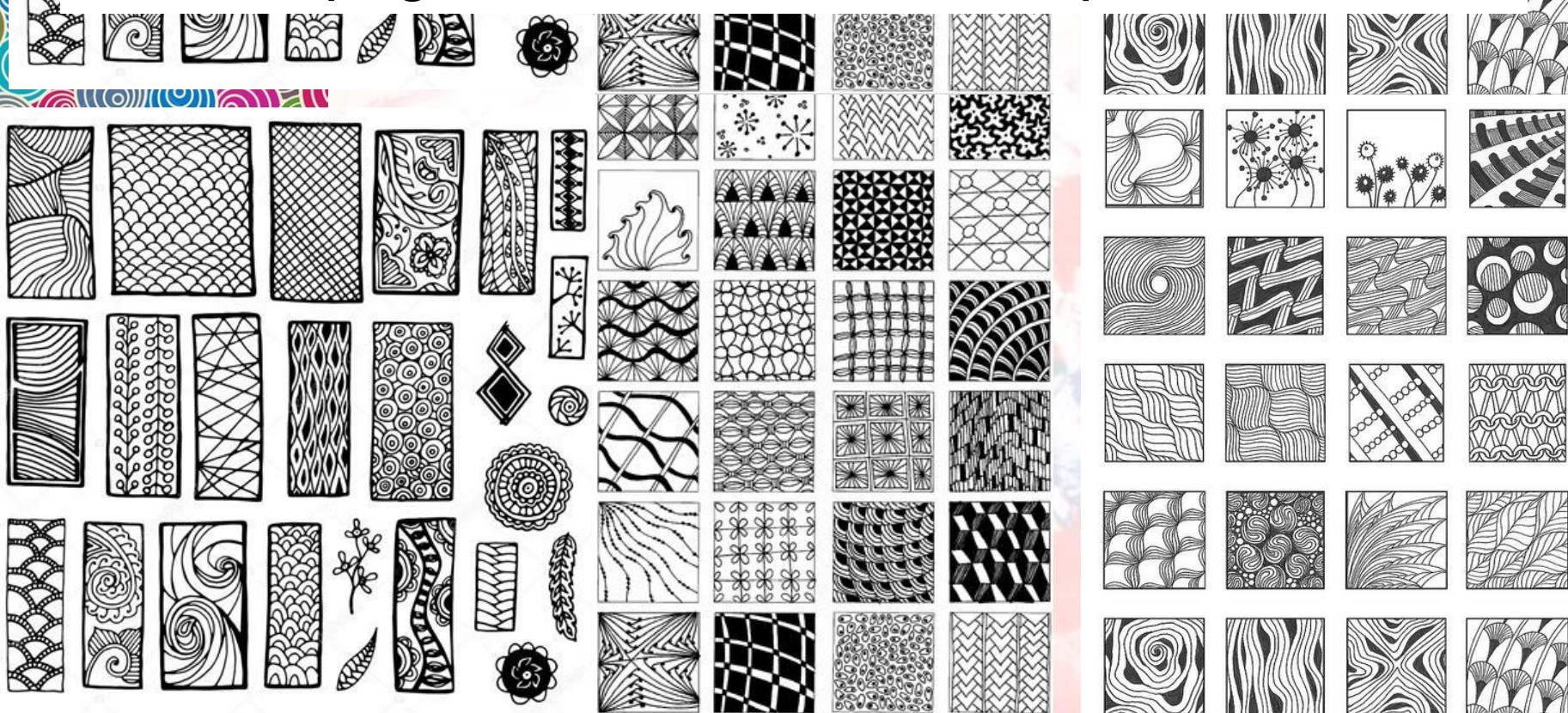
Write your response to this video. What is the key message?

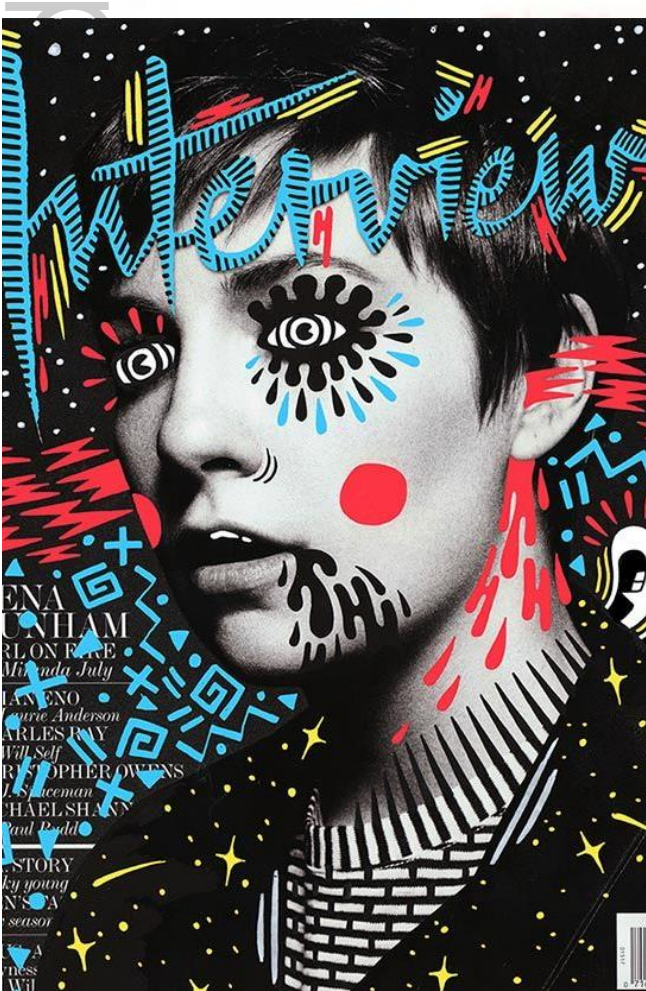




Use a black pen or biro to copy the patterns evenly.

Divide a page into 20 boxes to complete this task





Flexible
Thinking



Creating

Hattie Stewart

Use the patterns and marks from the previous slide to help you create a drawing onto a face.

Find an A4 magazine page or photograph

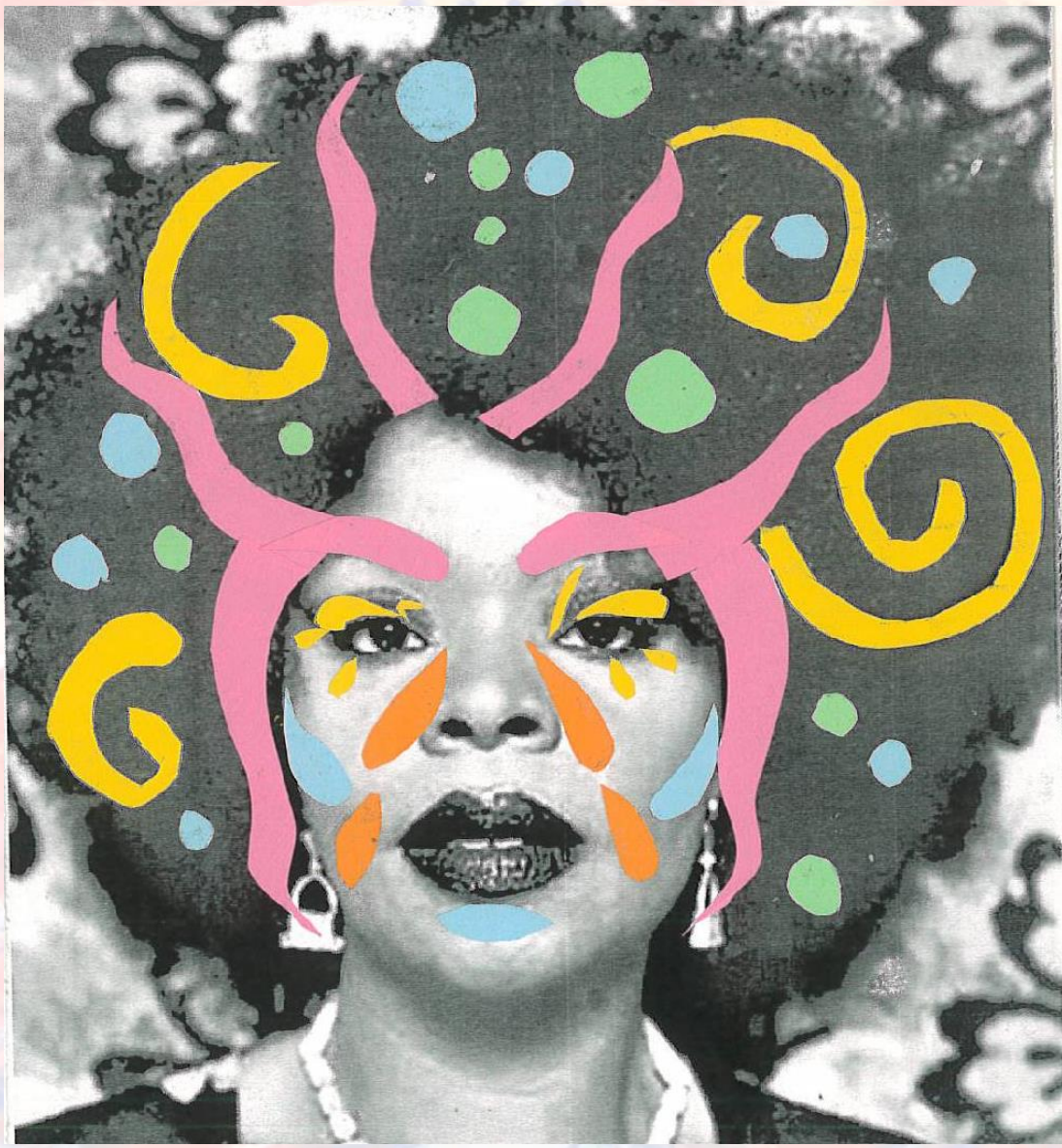






Have a go at
creating your
own image like
Hattie Stewart

Women Of the World



Draw attention to your eyes with pattern.





Creating

DO it NOW



Open your sketchbook

How does your work look?

Explain the success criteria to your partner

Write evaluation below your work



Creating

Do it Now



1. Good use of glue.
2. No pencil outlines
3. Pattern
4. Balance and symmetry
5. Frame the face, eyes, mouth
6. Colour balance



Linking

Big picture thinking

SYMBOLISM



Power

Female

Diversity

Growth

Trapped

Watched



Linking

Big picture thinking

Practise drawing and cutting from paper
Consider symbols about feminism



Power

Female

Diversity

Growth

Trapped

Watched

Drawing retrieval practise

Grid up the photograph
2cm squared



Drawing retrieval practise

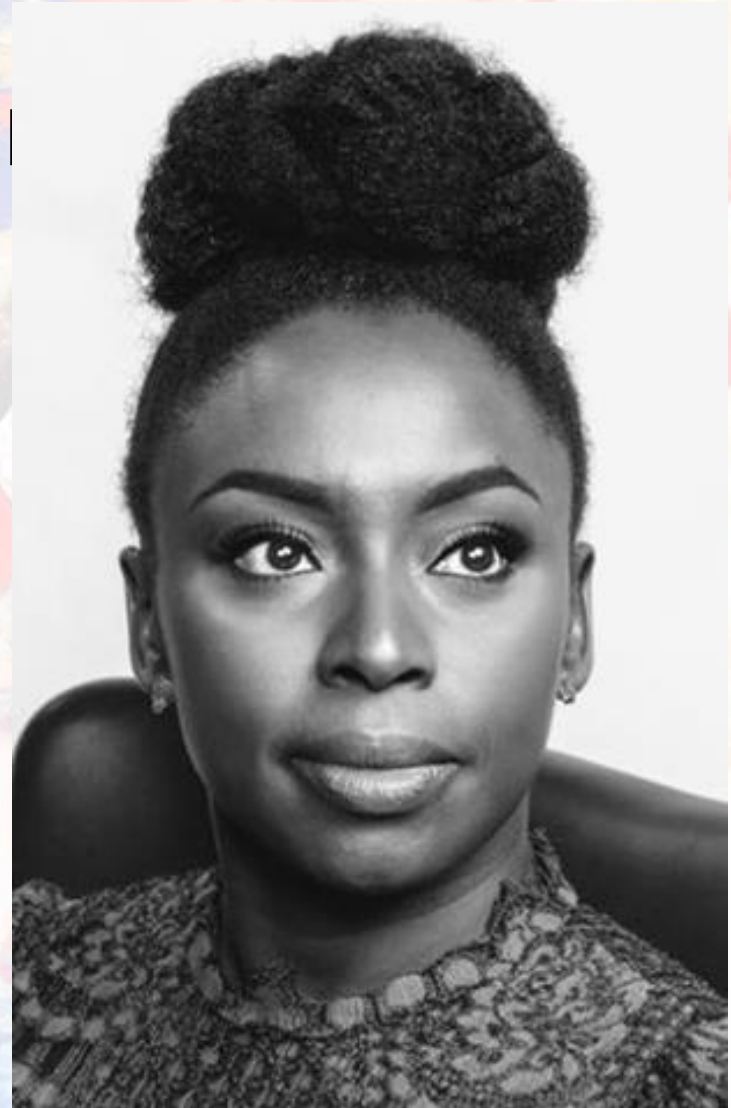
Week 1 Use the grid provided to match the photograph and draw the outline of the head only.

DRAW ONE SQUARE AT A TIME

Week 2 Draw the outline of the features in proportion, very lightly. (Eyes, nose, mouth)

Week 3 Apply corrections, and draw details to complete your line drawing.

O







Deliberate
Practice

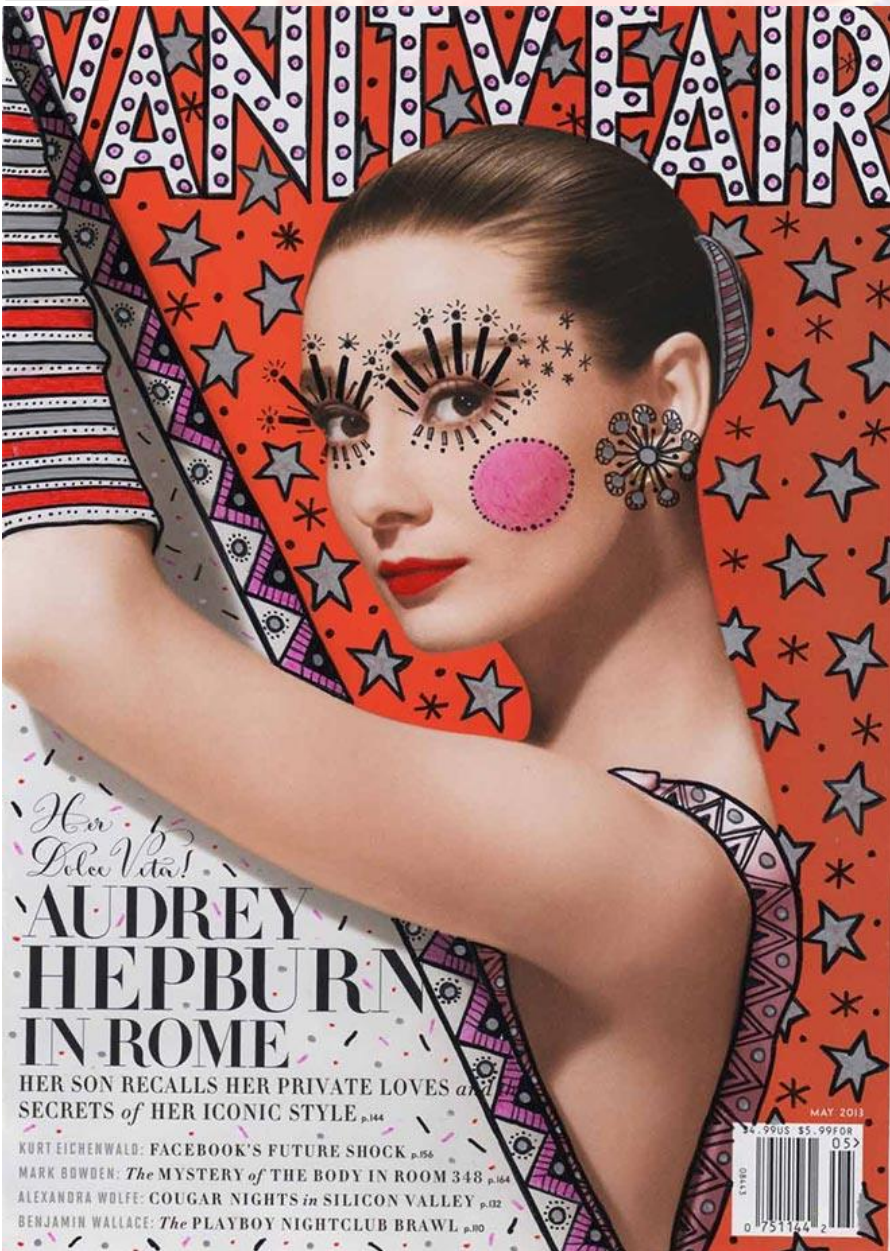
Do It Now



Cut rectangles from 3 or 4 different coloured papers.

Stick them on top of each other with a little gap in between each one. Be sure to stick down well!

Cut out some geometric shapes! Add them to a portrait photograph to frame the eyes and mouth.



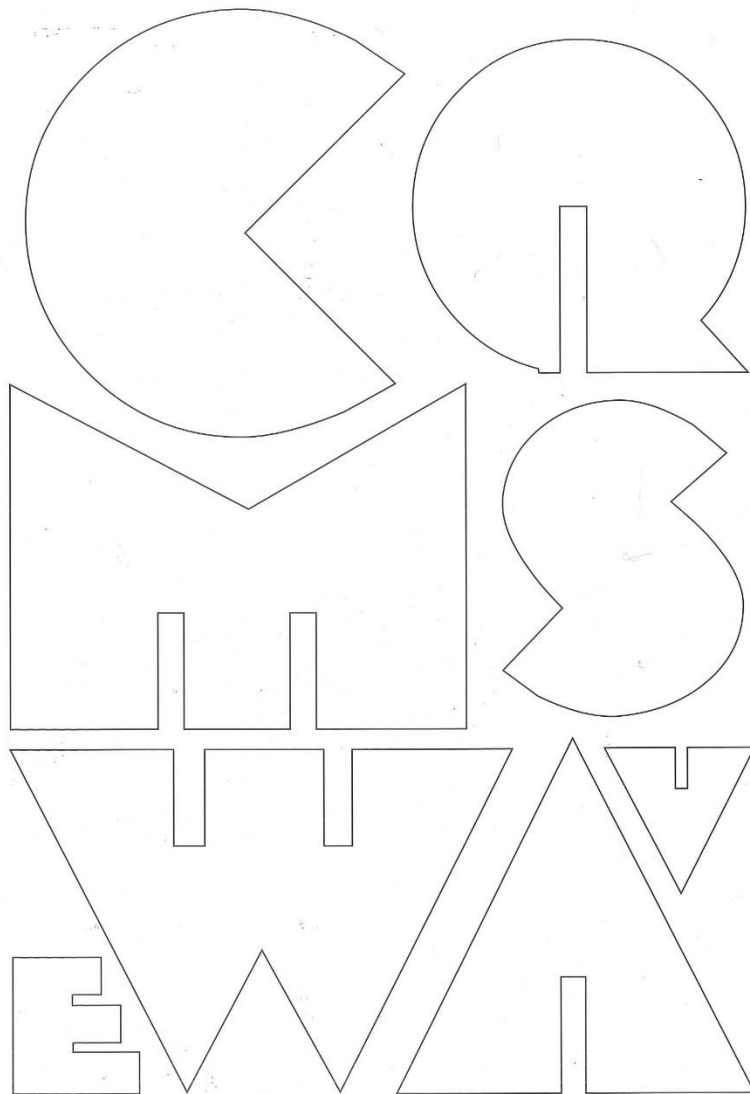


Use your stripy shapes to frame the features of a face on a magazine cover or a photograph.

Women Of the World



Add a decorative title to your image
to make it like a magazine cover



A B C D E F G
H I J K L M
N O P Q R S T
U V W X Y Z

BABY TEETH

Milton Glaser (1929–) is one of the most celebrated graphic designers working in the United States today. One of his major accolades came in 2009 when he became the first graphic designer to receive the National Medal of the Arts award.

Glaser originally designed the font Baby Teeth in 1964 and reportedly based it upon a hand-painted sign in Mexico City. It would become famous two years later when John Berg, then art director at Columbia Records, approached Glaser to design a poster that would be packaged with Bob Dylan's *Greatest Hits* LP. Featuring the Baby Teeth typeface, the poster would become one of the most widely circulated of all time; close to six million were distributed with the incredibly popular album. Capturing the spirit of the 60s, Dylan's face is positioned in profile and his hair transformed into a psychedelic rainbow with the word 'Dylan,' rendered in the Baby Teeth font, as the only text. The iconic poster is now a highly prized collectible item.

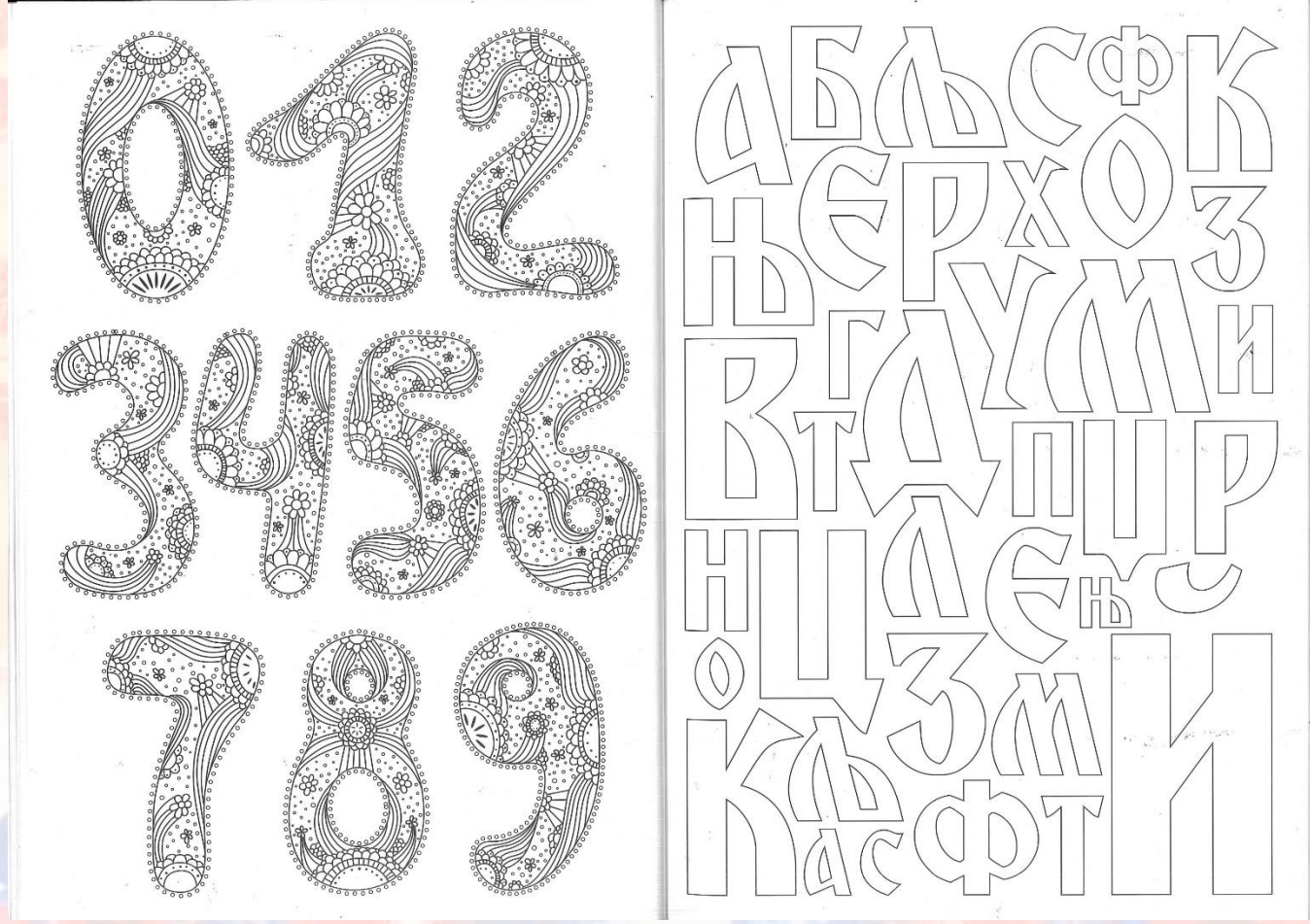
Q R
S T
U V

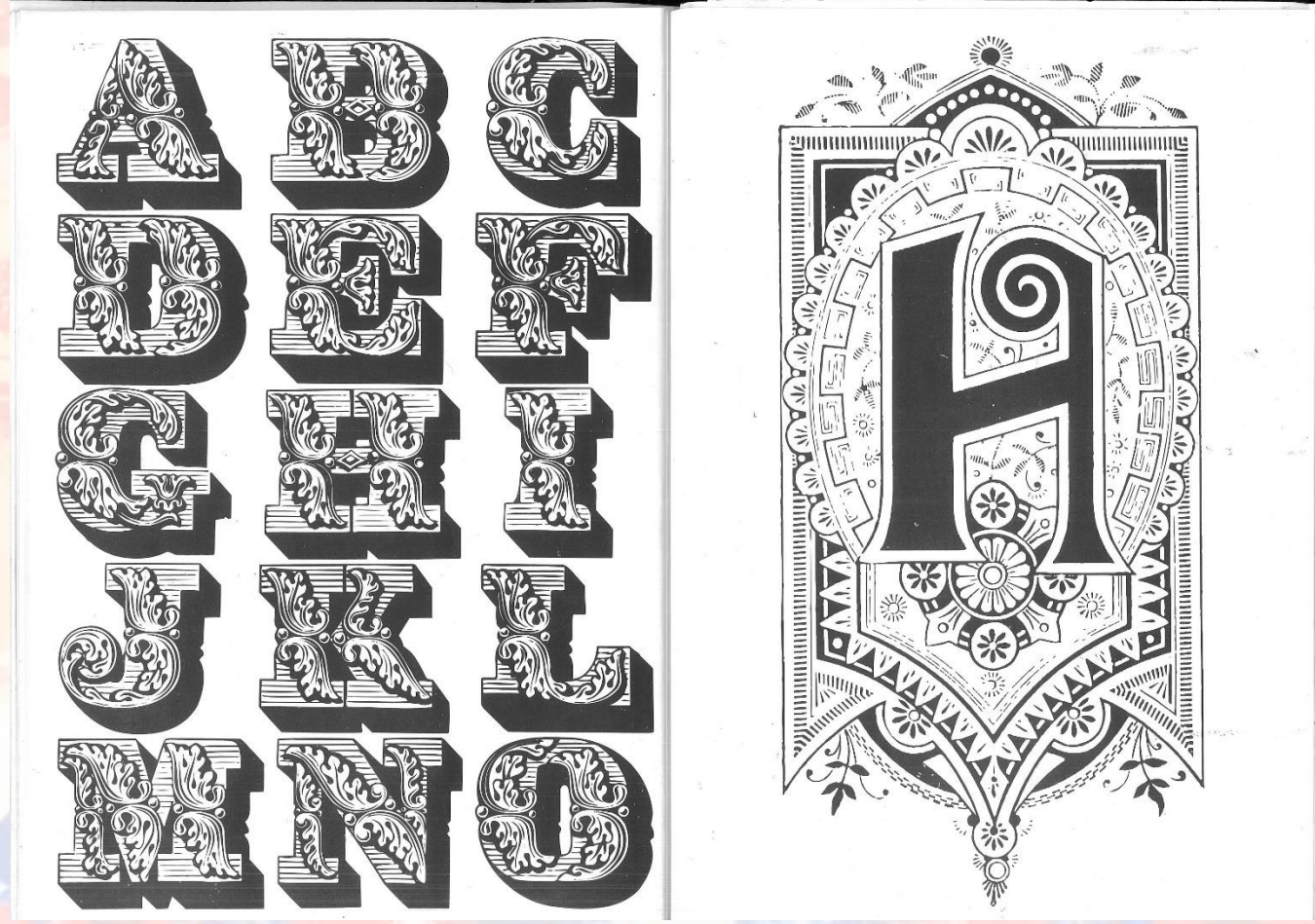
A B C D E F G
H I J K L M
N O P Q R S T
U V W X Y Z

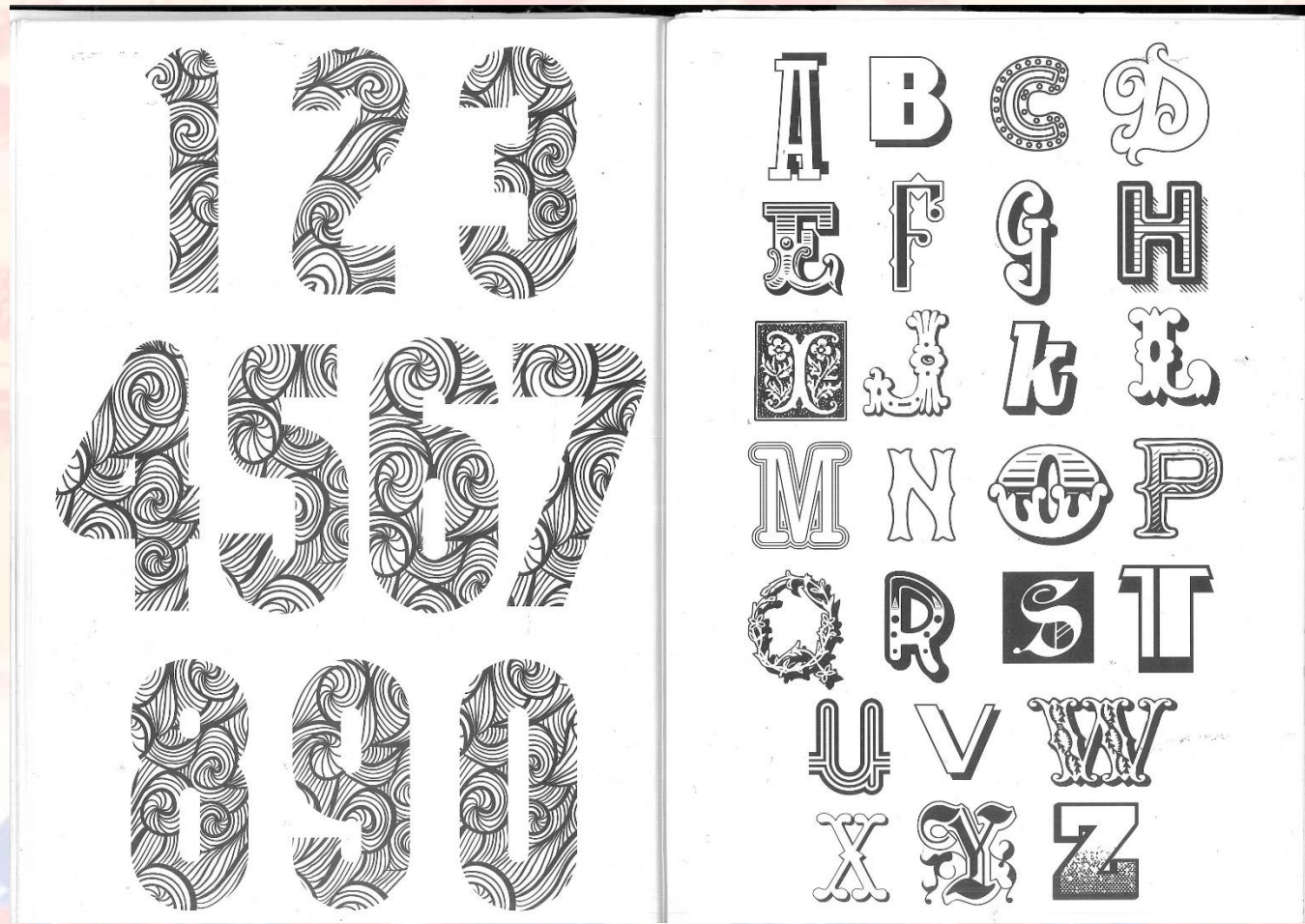
Baskerville

Designed in the late 1750s and named after its creator, the Baskerville font was the result of attempts to improve on the legibility of type created by William Caslon. Baskerville increased the difference between the width of the strokes, making the serifs (tails) finer and more tapered, and shifted the angle of rounded letters to a straighter position. As a result, the characters appear softer and more regular.

John Baskerville (1706–75) was a renowned writing master who was fascinated with the aesthetics of letter forms. Baskerville's roman type was applauded for its simplicity and subtle elegance, and he ensured greater clarity in its presentation by creating blacker, glossier inks and using fine polished paper to increase visual contrast.







Sculpture collage



Alter an object in the style of Emin, use paper and fabrics to collage onto the object, think carefully about the object and what it represents. Try and link it to what you have learnt about feminism eg - Dustpan and brush or a mop could symbolise domesticity and "women's work"







WOMEN REACT TO BEING CALLED BEAUTIFUL



https://www.youtube.com/watch?v=etAUOxS_178